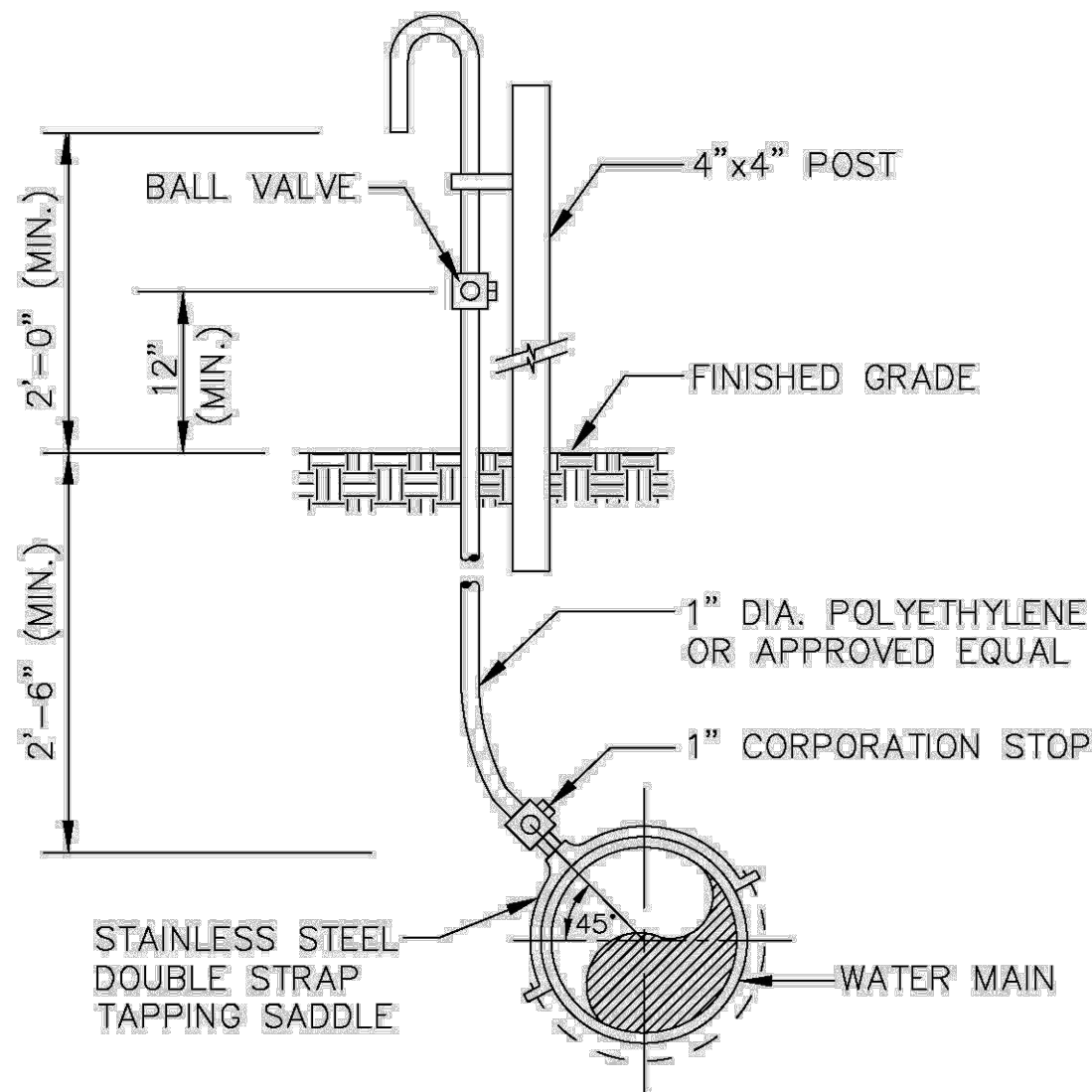


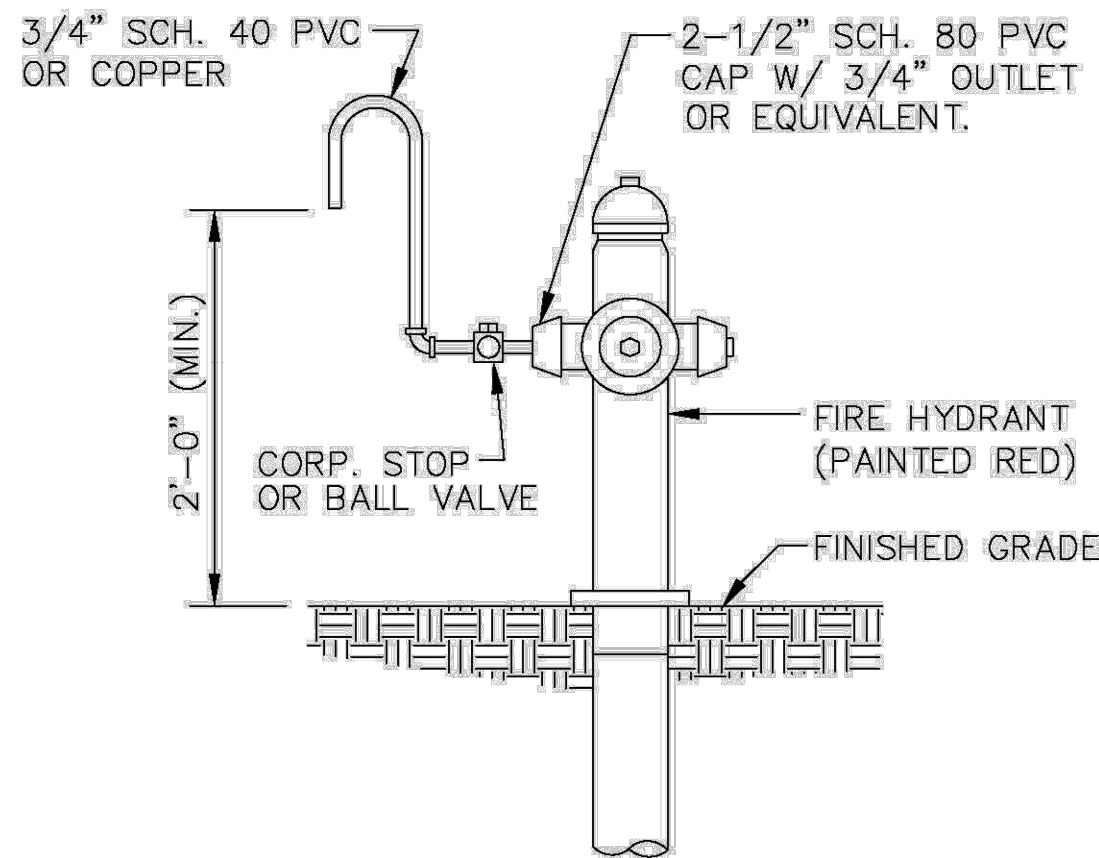
Plotted By: Fernandez, Giovanni. Sheet Set: MILLCREEK POMPANO BEACH WATER & SEWER DETAILS November 21, 2025 04:05:02pm K:\ETL_Civil\043 jobs\04375014 Mill Creek POMPANO Design\CADD\PlusSheets\C-UTIL-DTL.dwg
This document, together with the concepts and designs presented herein, is an instrument of service, as an instrument of service, is intended only for the specific purpose and client for which it was prepared. Reuse of and improper reliance on this document without written authorization and adaptation by Kimley-Horn and Associates, Inc. shall be without liability to Kimley-Horn and Associates, Inc.



SAMPLE POINT (MAIN)

ALL D.I.P. TO BE PAINTED
BLUE ON TOP HALF OF PIPE.

ENGINEERING STANDARDS 2025			
REVISIONS		ENGINEERING DIVISION	
BY	DATE	CITY OF POMPANO BEACH	
S.S.	04-2005		
		SCALE: N.T.S.	
		DATE: MAY 2022	
		DWG. NO. 100-1	

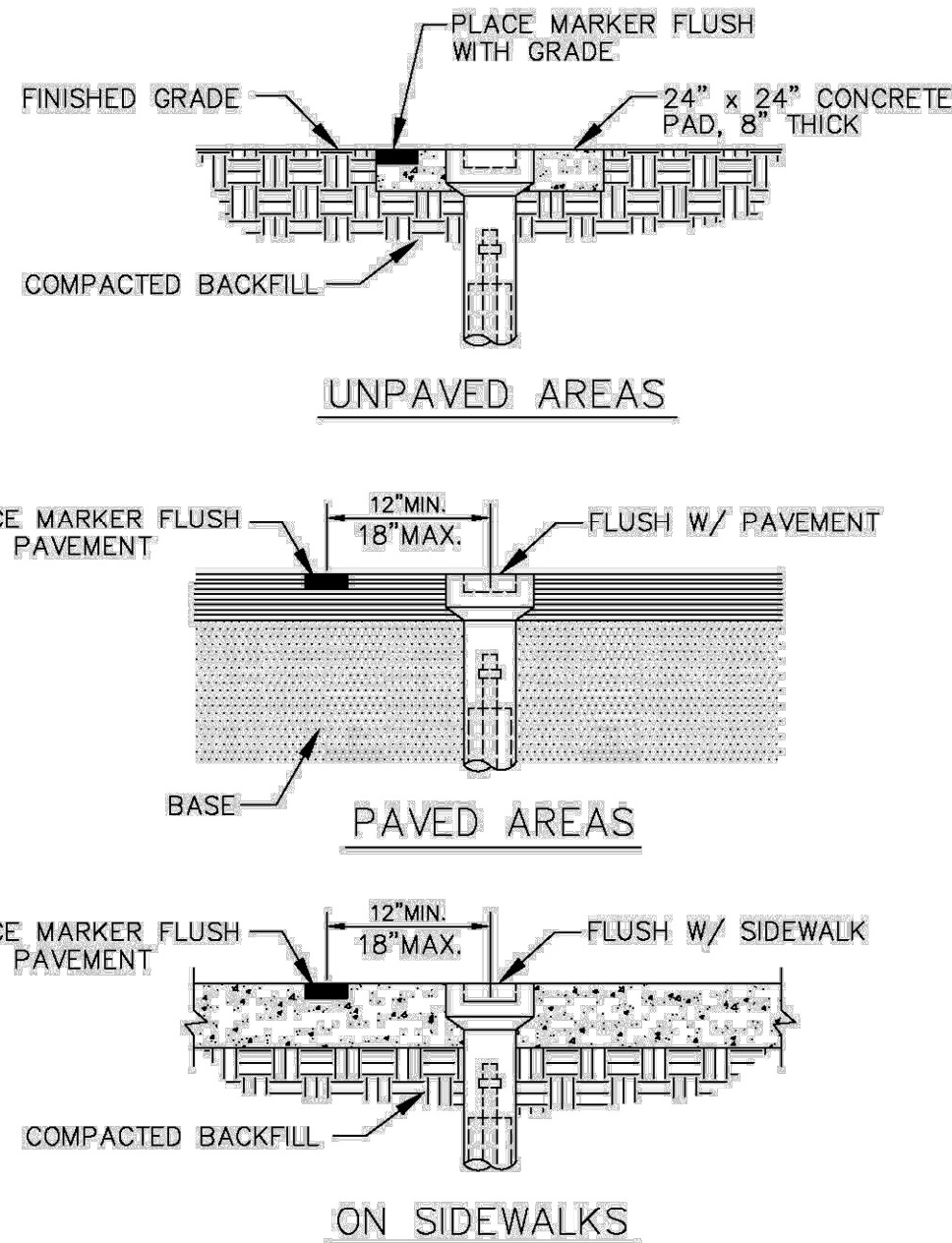


SAMPLE POINT (HYDRANT)

ALL POMPANO BEACH HYDRANTS SHALL BE PAINTED RED.

ALL D.I.P. TO BE PAINTED
BLUE ON TOP HALF OF PIPE.

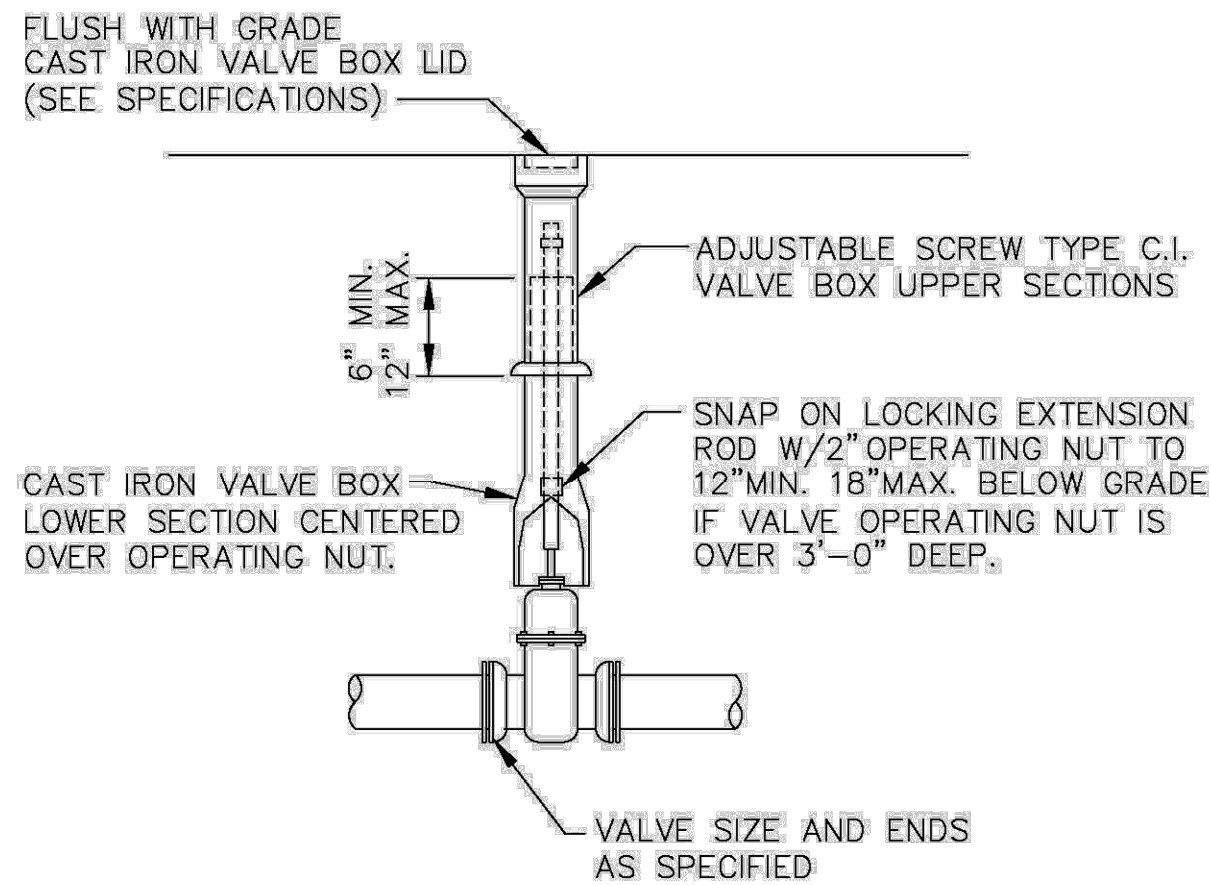
ENGINEERING STANDARDS 2025			
REVISIONS		ENGINEERING DIVISION	
BY	DATE	CITY OF POMPANO BEACH	
S.S.	04-2005		
		SCALE: N.T.S.	
		DATE: MAY 2022	
		DWG. NO. 101-1	



VALVE BOX SETTINGS

ENGINEERING STANDARDS 2025

ENGINEERING STANDARDS 2025			
REVISIONS		ENGINEERING DIVISION	
BY	DATE	CITY OF POMPANO BEACH	
S.S.	04-2005		
		SCALE: N.T.S.	
		DATE: MAY 2022	
		DWG. NO. 102-1	

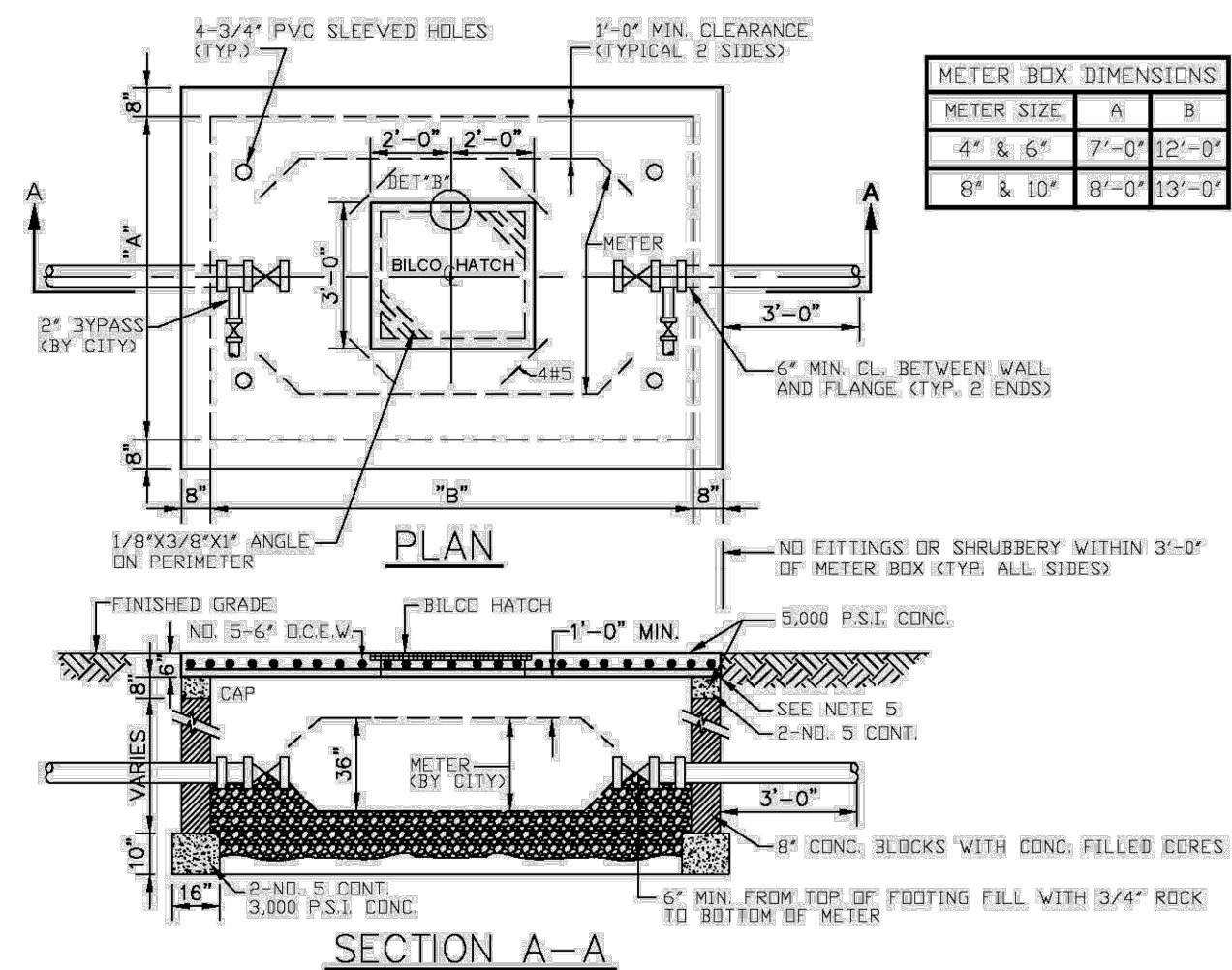


GATE OR PLUG VALVE SETTING

USE MEGALUGS AT ALL PIPE JOINTS

ALL D.I.P. TO BE PAINTED
BLUE ON TOP HALF OF PIPE.

ENGINEERING STANDARDS 2025			
REVISIONS		ENGINEERING DIVISION	
BY	DATE	CITY OF POMPANO BEACH	
S.S.	04-2005		
T.W.	11-2007		
		SCALE: N.T.S.	
		DATE: MAY 2022	
		DWG. NO. 103-1	

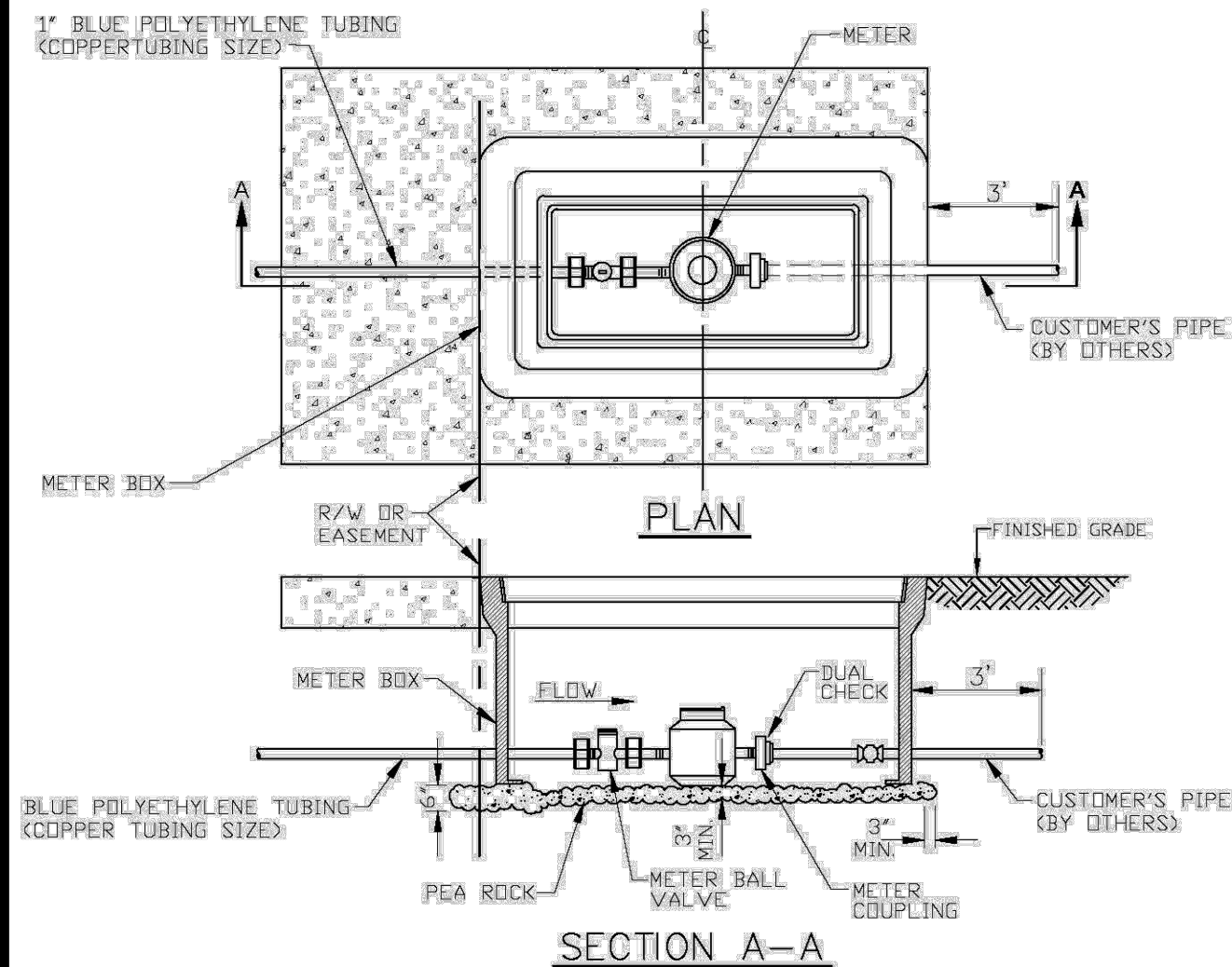


NOTES

1. THIS STRUCTURE & LID ARE FOR NON-TRAFFIC BEARING ONLY.
2. DO NOT CONSTRUCT METER BOX UNTIL AFTER METER IS IN PLACE.
3. CENTER BOX AROUND METER.
4. DO NOT TIE CONCRETE LID TO CONCRETE WALLS.
5. TOP OF LID TO BE @ FINISH GRADE ELEV.
6. CUT OUT REPLACEABLE 10" SQUARE OVER EACH READING HEAD & FASTEN W/CHAIN.
7. FITS NEPTUNE R450 ANTENNA.
8. BILCO HATCH MODEL J-AL OR JD-AL OR EQUAL.

LARGE METER BOX

ENGINEERING STANDARDS 2025			
REVISIONS		ENGINEERING DIVISION	
BY	DATE	CITY OF POMPANO BEACH	
T.W.	03-2008		
S.S.	01-2012		
S.S.	11-2012		
		SCALE: N.T.S.	
		DATE: MAY 2022	
		DWG. NO. 105-1	



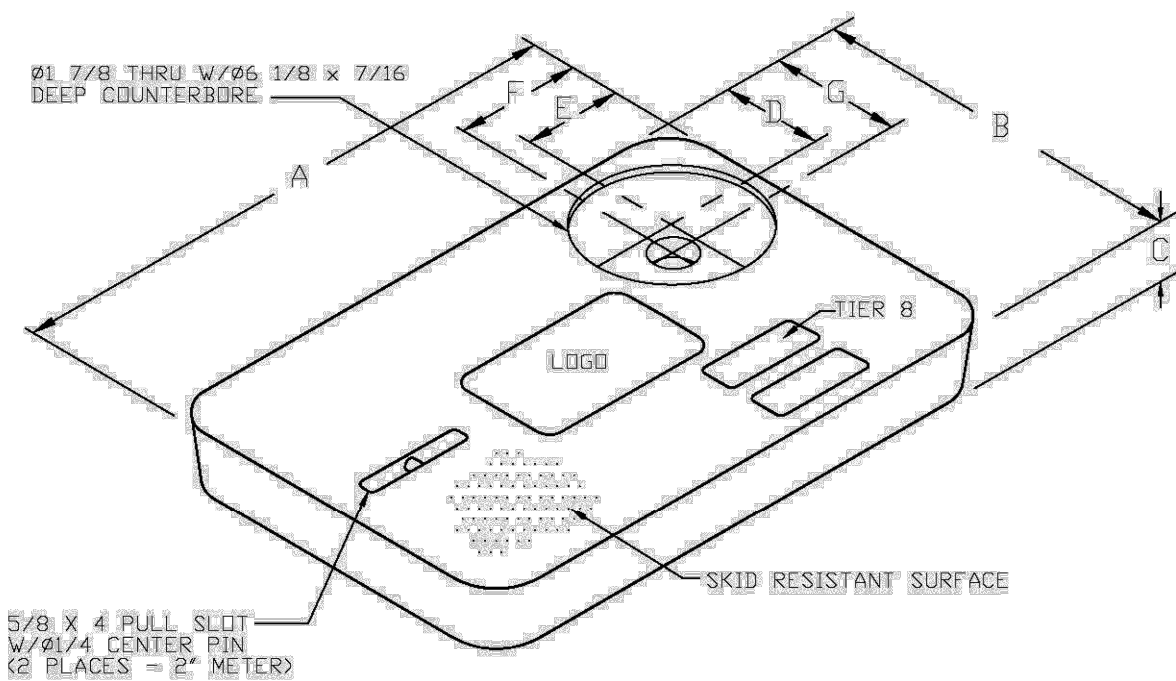
NOTES

1. ALL METERS WILL BE SUPPLIED AND INSTALLED BY COPS UTILITIES. METER HAS IRON PIPE THREAD MALE CONNECTION ON EACH END.
2. METER SHALL BE CENTERED IN BOX.
3. DUAL CHECK IS SAME SIZE AS CUSTOMER'S SERVICE LINE.

METER SIZE	LAYING LENGTH (IN)	HEIGHT (IN)
3/4"	7/8	4/56
1"	10/75	5/75

METER BOX INSTALLATION

ENGINEERING STANDARDS 2025			
REVISIONS		ENGINEERING DIVISION	
BY	DATE	CITY OF POMPANO BEACH	
S.S.	11-2012		
		SCALE: N.T.S.	
		DATE: JAN. 2022	
		DWG. NO. 105-2	



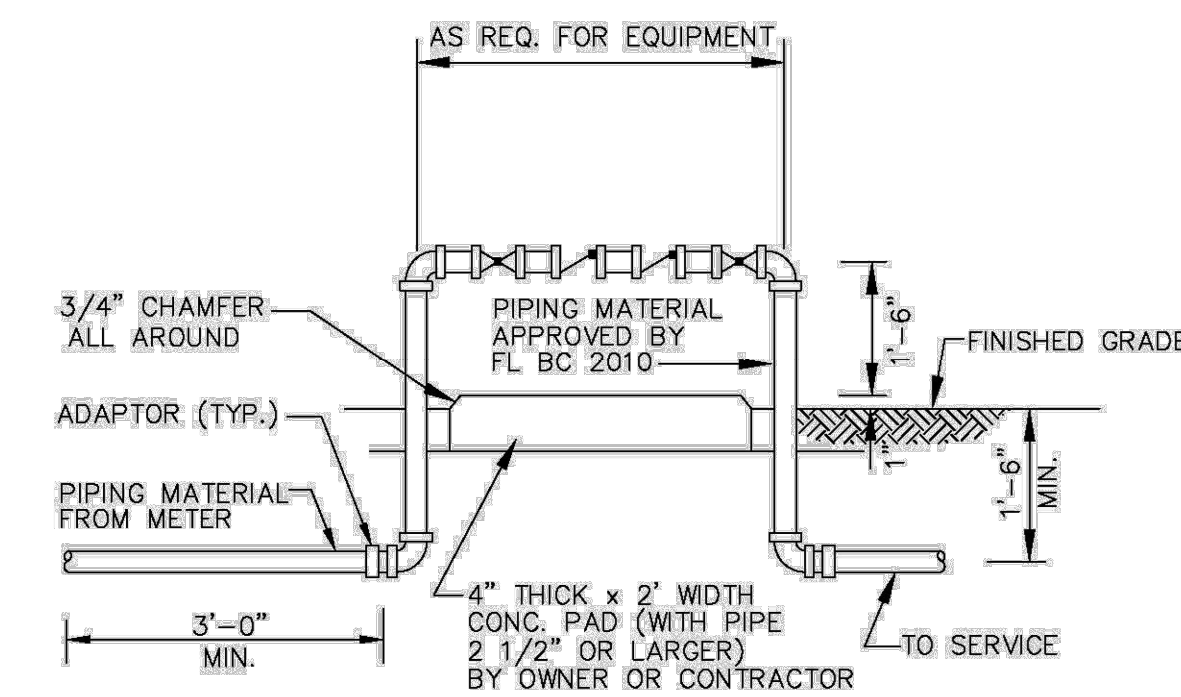
METER BOX COVER DIMENSIONS (IN)							
METER SIZE	A	B	C	D	E	F	G
1"	18 1/8"	11 1/4"	1 3/4"	3 3/4"	4"	4 9/16"	4 5/16"
1 1/2"	23 1/4"	13 3/4"	2"	4"	4"	4 9/16"	4 9/16"
2"	30 1/2"	17 1/2"	2"	4"	4"	4 9/16"	4 9/16"

NOTES

1. CUSTOMER IS CITY OF POMPANO BEACH FLORIDA. LOGO TO BE SPECIFIED. CITY OF POMPANO BEACH POTABLE WATER.
2. FITS NEPTUNE R450 ANTENNA.
3. THIS COVER IS RATED FOR A STATIC DESIGN LOAD OF 8,000 LBS. (35,548 N) OVER A 10 (254) X 10 (254) AREA AND MUST PASS A MINIMUM STATIC TEST LOAD OF 12,000 LBS (53,378 N).
4. METER BOX COVER SHOULD BE RATED FOR TRAFFIC CONDITION AS DETERMINED BY ENGINEER OF RECORD.

POTABLE WATER METER BOX COVER

ENGINEERING STANDARDS 2025			
REVISIONS		ENGINEERING DIVISION	
BY	DATE	CITY OF POMPANO BEACH	
S.S.	11-2012		
		SCALE: N.T.S.	
		DATE: JAN. 2022	
		DWG. NO. 105-3	



BACKFLOW PREVENTER

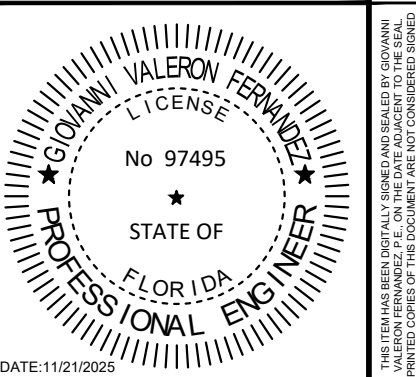
USE MEGALUGS AT ALL PIPE JOINTS 3" AND LARGER
PLEASE SEE METER INSTALL DIMENSION LIST ON STANDARD NO. 106-4
SMALL UNITS UNI-STRUT SUPPORT

ENGINEERING STANDARDS 2025			
REVISIONS		ENGINEERING DIVISION	
BY	DATE	CITY OF POMPANO BEACH	
T.W.	04-2008		
S.S.	03-2009		
S.S.	11-2012		
S.S.	01-2013		
		SCALE: N.T.S.	
		DATE: MAY 2022	
		DWG. NO. 106-1	

DRC
PZ25- 12000028
01/07/2026

Kimley»Horn

© 2025 KIMLEY-HORN AND ASSOCIATES, INC.
8201 PETERS ROAD, SUITE 2200, PLANTATION, FL 33324
PHONE: 954-535-5100 FAX: 954-739-2247
WWW.KIMLEY-HORN.COM REGISTRY NO. 35106



KHA PROJECT	043175014
DATE	11/01/2025
SCALE	AS SHOWN
DESIGNED BY	GVF
DRAWN BY	EA
CHECKED BY	GVF

WATER & SEWER
DETAILS

MODERA POMPANO
BEACH
PREPARED FOR
MCRT INVESTMENTS LLC
FLORIDA
POMPANO BEACH

SHEET NUMBER
C-401